

Greenpeace perspective on Phosphorus and Nitrogen management

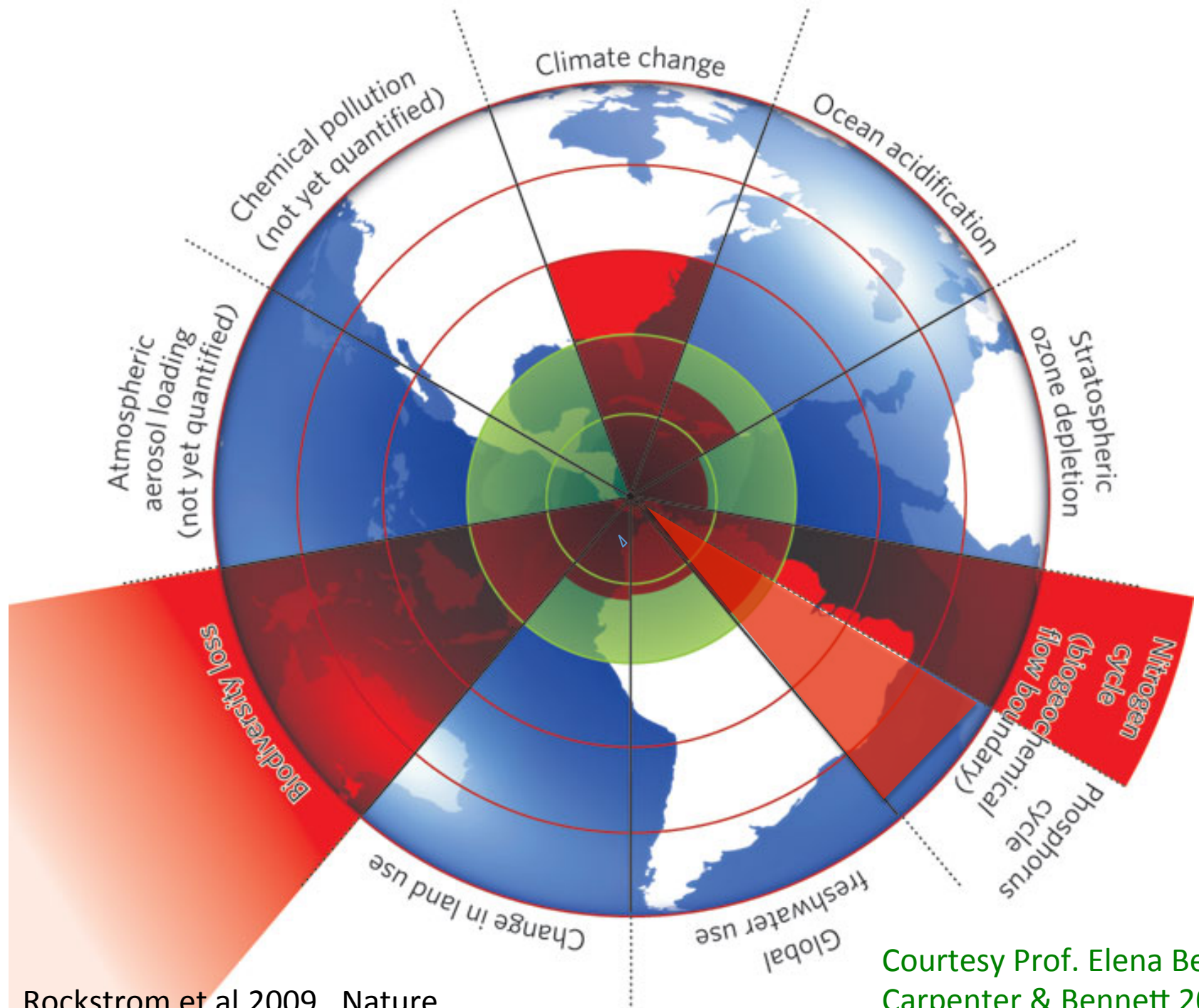
Dr. Reyes Tirado

Senior Research Scientist

Greenpeace Research Laboratories

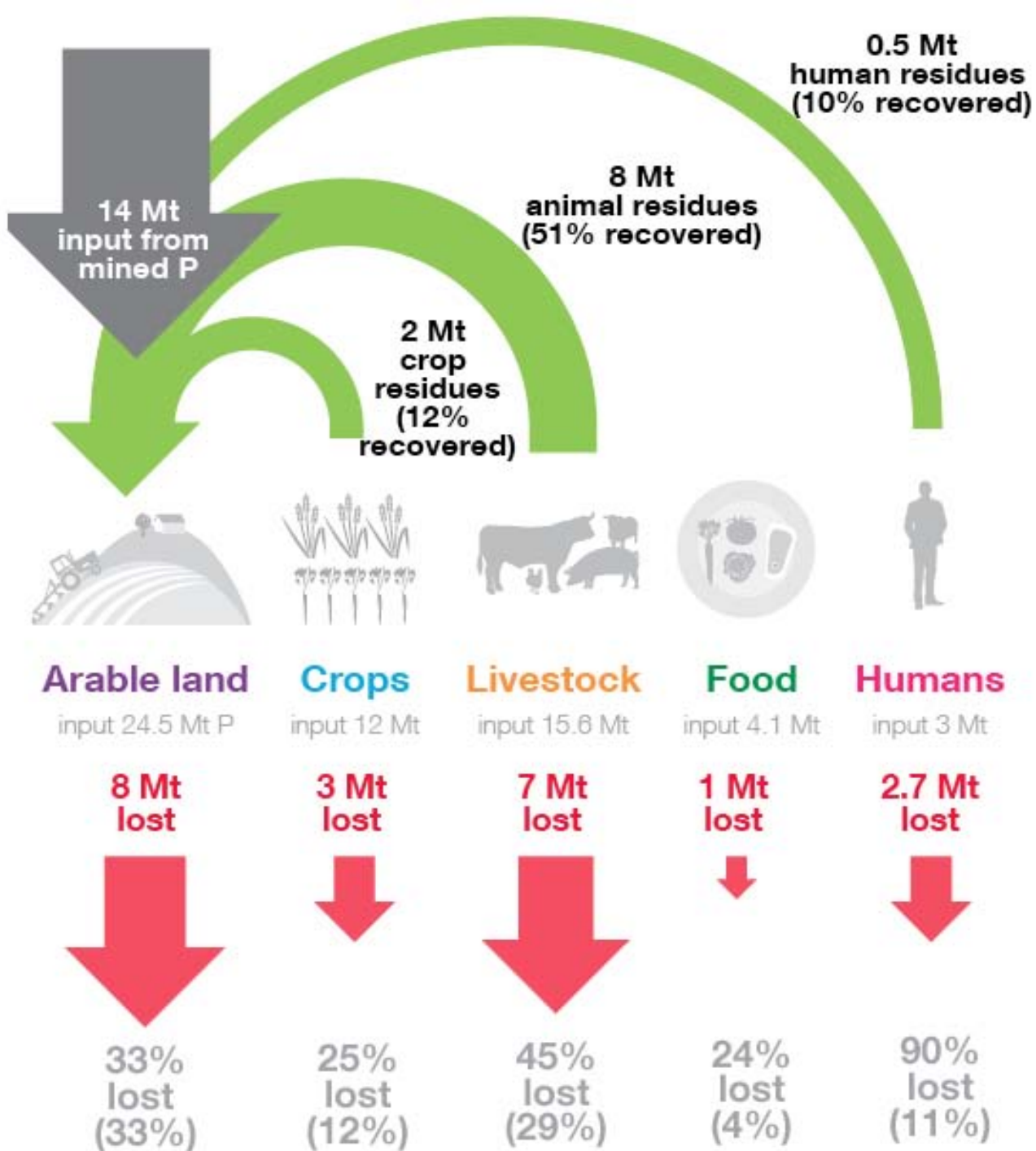
University of Exeter, UK





Rockstrom et al.2009. Nature

Courtesy Prof. Elena Bennet,
Carpenter & Bennett 2011













A farmer tills his field in Lantien village, Manipalpur district. The Mahatma Gandhi National Rural Employment Guarantee Scheme (MGNREGS) and other such schemes could hold great potential for providing labour support for labour-intensive practices in states like Bihar.
© Karan Vaid / Greenpeace







MANURE
HAPPENS



KILLIC BRAND



Thanks!

reyes.tirado@greenpeace.org